


ADDRESS & DIRECTIONS TO PARKS, TRAILS AND PRESERVES

Locations listed in alphabetical order and the expected "getting around while there" is listed as Easy, Moderate, or Difficult. Visitors are encouraged to check out the location's websites for details.

	Location Key	C = Central	S = Southern
	E = Eastern	N = Northern	W = Western

Buchanan Park (C)

Corner of Race Avenue and at 901 Buchanan Avenue, Lancaster. Open dawn to dusk. Includes large grass area, basketball courts, playground and a pavilion. Easy. Surface: paved, dirt, grass.

Chickies Rock County Park (W)

880 Chickies Hill Rd, Columbia. Parking available off Breezy View Rd. (Columbia Borough) at the Breezy View Overlook. Rte. 441 North, parking lot on left. Parking available off Old Chickies Hill Rd. (West Hempfield Township). Easy to moderate. Surface: crushed stone. bit.ly/2TMzOOj

Climbers Run Nature Preserve & Natural Playground (C)

226 Frogtown Rd. Pequea. Note: Visitors may be asked to refrain from visiting during Summer Camp activities June through October between 9am – 2pm. Schedule of open/closed dates & times posted. Easy to difficult. Surface: dirt, grass. bit.ly/2OfsHrl

Conestoga Greenway Trail (C)

Park at S. Duke St., enter at Conestoga Creek Park. The Greenway follows along the Conestoga River on S. Conestoga Drive, and ending at Betz Rd. Open year-round. Easy. Surface: paved. bit.ly/2CwxccG

Conewago Recreation Trail (W)

2385 N. Market St, Elizabethtown. The trailhead is on the right just before a bridge over Conewago Creek. Easy to moderate. Surface: crushed stone. bit.ly/2OfmlmB

Denver Memorial Park (N)

801 Main St, Denver. Walking trail, playground. Open dawn to dusk. Easy. Surface: paved, dirt, grass.

Enola Low Grade Trail (S)

Many parking places along the trail. Manor Township trailhead accessible from Rte. 441 at Turkey Point base. Conestoga Township has info kiosk at the end of Colemanville Church Rd. (north of the trail). Access to the trail going west from Rte. 324 parking lot in Martic Township is closed. Easy, moderate, difficult. Surface: crushed stone, dirt. bit.ly/2HyeGED

Ferncliff Wildlife and Wildflower Preserve (S)

Wildlife Preserve Rd, Drumore. Easy to moderate. Surface: dirt. bit.ly/2TgBKcx

Garden of Five Senses (Lancaster County Central Park) (C)

1050 Rockford Rd, Lancaster. Open year-round. Easy, moderate. Surface: paved. bit.ly/2HvVibE

Homewood Nature Preserve (E)

351 Keneagy Hill Rd, Ronks. On Keneagy Hill Rd., drive south for 1.1 miles. Look for small red barn on the left. The barn and surrounding fields and woods comprise the Preserve. Park in designated parking areas. Easy to moderate. Surface: dirt, grass. bit.ly/2HOL6tQ

Intercourse Community Park (E)

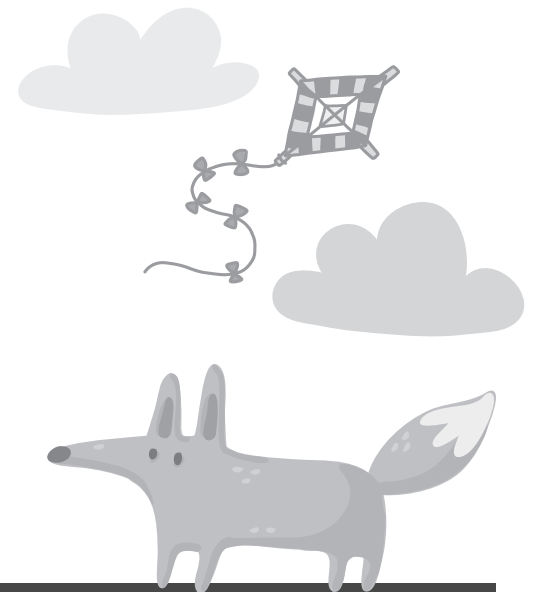
3730 Old Philadelphia Pike, Gordonville. Walking trails are open to the public at all times. Easy, moderate. Surface: paved, dirt, grass.

Lancaster Junction Recreation Trail (N)

99 Champ Blvd, Manheim. Park at the Southern end, at the end of Champ Road. This road intersects Spooky Nook Road and parallels PA Rte. 283. Open dawn to dusk. Easy. Surface: crushed stone. bit.ly/2Warkx5

Landis Woods Park (N)

Meadow Lane, Lancaster. Open dawn to 10pm. Easy, moderate. Surface: paved, dirt, grass. bit.ly/2TM9pjw



ADDRESS & DIRECTIONS TO PARKS, TRAILS AND PRESERVES

Long's Park (C)

The 80-acre city park sits at the intersection of Harrisburg Pike and Route 30. Open from 7am-10pm during the summer. Easy, moderate. Surface: paved, dirt, grass. Petting Zoo opens June 10, from 10am-3pm (closes for lunch from 11:45am-12:45pm). If it rained the day before, the ground may be muddy and they may close. bit.ly/2TgV3m8

Middle Creek Wildlife Management Area & Middle Creek Trails (N)

Kleinfeltersville Rd. Stevens; to Visitor Center at 100 Museum Rd., Stevens. Grounds open dawn to dusk. Moderate to difficult. Surface: paved, grass, dirt. Visitor Center paved. bit.ly/2kaSCFa

Money Rocks County Park (E)

936 Narvon Rd. Narvon. On Narvon Rd. go 1 mile, parking on the right across from Alexander Dr. Moderate to difficult. Surface: rocky and uneven. bit.ly/2OfexGO

Musser Park (C)

135 N. Lime St., Lancaster city. Includes playground equipment. Open dawn to dusk. Easy. Surface: dirt, grass.

Northwest Lancaster County River Trail (W)

Trail's southern end starts at Columbia Crossing River Trails Center. Park here. The northern end of the trail nears Bainbridge. The trail's northern trailhead in Falmouth (Lebanon County). Easy, moderate, and difficult. Surface: paved, dirt, grass. bit.ly/2Fr4VpH

Old Trolley Line Park (W)

475 Beverly Rd., Elizabethtown in Mount Joy Township. Turn into park, and look for signage directing to a designated back parking lot which is closer to the trailhead (and will connect to Conewago Recreation Trail too). Open dawn to dusk. Easy to moderate. Surface: crushed stone. bit.ly/2OjVsU8

Reservoir Park (C)

701 E. King St., Lancaster city. Includes playgrounds, wading pool. Open dawn to dusk. Easy. Surface: dirt, grass.

Shenks Ferry Wildflower Preserve (S)

Green Hill Road South, Conestoga. Dawn to dusk. Note: Green Hill Rd south of the preserve is closed. Please approach the nature preserve from the northern boundary. Easy. Surface: dirt, grass. bit.ly/2JqDLDq

Shuts Environmental Center (C)

3 Nature's Way, Lancaster. Located in Lancaster County Central Park. Easy to moderate. Surface: field, blacktop. bit.ly/2TIDaT0

Speedwell Forge County Park (N)

W. Brubaker Valley Rd, Lititz. Pass by Speedwell Forge Lake, turn right on Lakeview Dr. Drive will merge with Speedwell Forge Rd. Continue until the parking area. Open dawn to dusk. Moderate. Surface: dirt, grass. bit.ly/2unb67H

Tanger Arboretum (C)

Corner of Marietta Ave. and North President Ave., Lancaster. Maps of the Arboretum and the Dwarf Conifer Reference Garden are available at LancasterHistory.org front desk during operating hours. Easy. Surface: paved, dirt, grass. bit.ly/2TM4HCc

Theodore A. Parker III Natural Area (S)

114 Wesley Rd, Quarryville. 100-acre park is named after Theodore A. Parker III, an internationally known ornithologist from Lancaster county. Open dawn to dusk. Moderate. Surface: dirt, grass. bit.ly/2uiZanN

Warwick to Ephrata Rail Trail (N)

Begin at Broad St. in Lititz. Trail extends along the former Reading Railroad corridor; ends at W. Chestnut St., Ephrata. Easy. Surface: paved. bit.ly/2CvNSkr

Welsh Mountain Nature Preserve (E)

601 Gault Rd, New Holland. On Gault Rd., drive 1 mile to the Preserve. Park on the north side of Gault Rd. Look for the Lancaster County Conservancy Welsh Mountain Preserve Sign. Easy to moderate. Surface: dirt. bit.ly/2UQesvW

